



# **FLEXALEN® 600**

## **HP**

PRE-INSULATED PIPING SYSTEM FOR HEAT PUMPS OR  
REMOTE BOILER APPLICATIONS

# Extremely Flexible Heat Pump Connection Kit

## BENEFITS

- Available in coils for fast and easy installation.
- Ideal for connecting Mono-block heat pumps
- Hot water feed & return, electric feed and data communications in one pipe system
- High pressure rating 95°C/8bar
- The corrugated casing pipe, polyolefin foam and the polybutene service pipe are recyclable and *Cradle* to *Cradle*™ certified
- Welded or compression fittings available
- Flexenergy service: Support with integrated network design, calculation tools, training and on-site support

## FLEXALEN® 600 HP

**Corrugated PE Casing pipe**  
Flexibility and mechanical protection

**Homogenous foamed Polyolefin foam Polyolefin foam**  
Closed-cell, CFC-free

**Polybutene service pipe 32,40 & 50mm**  
Feed and Return

**Corrugated Conduit pipe**  
Easy insertion of cables

## APPLICATIONS

- Mono-block heat pump connection
- Remote Boilers
- Connection of adjacent buildings



Smallest bending radius max. 0.6m



One wall entry

## Technical Properties Flexalen® 600

Flexalen® 600 is a pre-insulated flexible plastic pipe system produced conform the European standard EN15632-1,3 and KIWA system certified as well as third-party controlled according BRL KOMO 5609-2.

### Flexalen® PB service pipe (EN-ISO 15876)

Max. service temperature	95°C
Continuous service temperature	80°C
Max. operating pressure	8bar(95°C)

### Thermal Insulation

Polyolefin foam
Closed-cell structure, CFC-free
Water vapour diffusion $\mu \geq 3,500$

### Conduit

Polyolefin material
corrugated

## FLEXALEN® 600 HEAT LOSSES

### Heat loss q [W/m] for one Single line

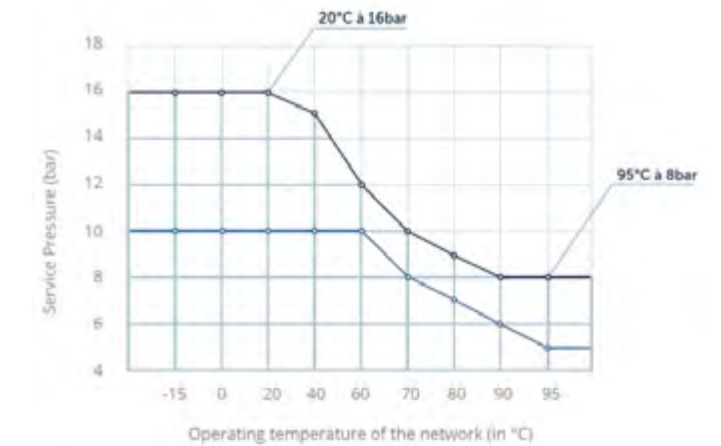
Flexalen® 600 Double line	Operating temperature T [°C]						
	20°C	30°C	40°C	50°C	60°C	70°C	80°C
32 + 32 / 125	2.8	5.7	8.5	11.3	14.2	17.0	19.8
40 + 40 / 160	2.6	5.1	7.7	10.2	12.8	15.3	17.9
50 + 50 / 160	3.4	6.8	10.1	13.5	17.0	20.3	23.7

### Calculation parameter

$\lambda_{\text{soil}}$ :	1.00 W/m·K
R soil surface to ambient air:	0.0685 m <sup>2</sup> ·K/W
T <sub>soil</sub> :	10.0 °C
Soil covering:	0.8m

The heat loss characteristics are in accordance with the European standard for flexible heating pipes systems EN15632. Heat losses are for the standard Flexalen® 600 pre-insulated pipe.

## FLEXALEN® 600 PRESSURE RATING



Up to OD110 20°C/16 bar 95°C/8 bar  
 $\geq$  OD125 20°C/10 bar 95°C/5 bar

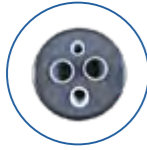


# Availability

Available as a kit and by the metre (pipe only)

## Kit Content

Flexalen® 600 HP double pipe with conduits



4x compression fitting SDR11 male thread



2x end caps for quattro pipe



1x trace warning tape, 100m roll



Flexalen® 600 HP				Packaging			Product code
Service pipe OD x s [mm]	Conduit OD [mm]	Casing pipe OD [mm]	Min. bending radius [m]	Length [m] <sup>1</sup>	Dimensions [cm]	Weight [kg]	
2X 32/3.03	25 + 25	125	0.5	5	145 X 145 X 35	20.5	1143-125001-004
				10	145 X 145 X 35	28.7	1143-125002-004
				15	145 X 145 X 50	27.5	1143-125003-004
				20	145 X 145 X 50	33.8	1143-125004-004
2X 40/3.7	32 + 25	160	0.6	5	145 X 145 X 35	28.4	1143-160001-004
				10	145 X 145 X 35	32.5	1143-160002-004
				15	145 X 145 X 50	42.3	1143-160003-004
				20	145 X 145 X 50	52.0	1143-160004-004
2X 50/4.6	32 + 25	160	0.6	5	145 X 145 X 35	28.4	1143-160051-004
				10	145 X 145 X 50	32.5	1143-160052-004
				15	145 X 145 X 50	42.3	1143-160053-004
				20	145 X 145 X 50	52.0	1143-160054-004

<sup>1</sup> Fixed length, other lengths available on request. Also available without carton as a pipe coil and attached accessories.

<sup>2</sup> delivered on coil, without cardboard box.

## By the metre

Product Code	Dimension	Service pipes OD x e [mm]	Service Pipes [DN]	Service pipes [inch]	Conduit 1	Conduit 2	Casing pipe OD [mm]	Weight [kg/m]	Smallest bending radius [m]	Coil I.D. max. [m]	Coil Width max. [m]	Coil Length max. [m]	Coil O.D. max. [m]
1140-125032-004	32 + 32 / 125	32 X 2.9	25	1"	25	25	125	2.00	0.50	1.50	1.2	300	2.9
1140-160040-004	40 + 40 / 160	40 X 3.7	32	1¼"	32	25	160	2.60	0.60	1.50	1.2	150	2.9
1140-160050-004	50 + 50 / 160	50 X 4.6	40	1½"	32	25	160	3.10	0.60	1.50	1.2	150	2.9

## Accessories



Compression fitting system



End caps



Wall entries / Annular space sealing



House entry bend



Clamps (recommended)

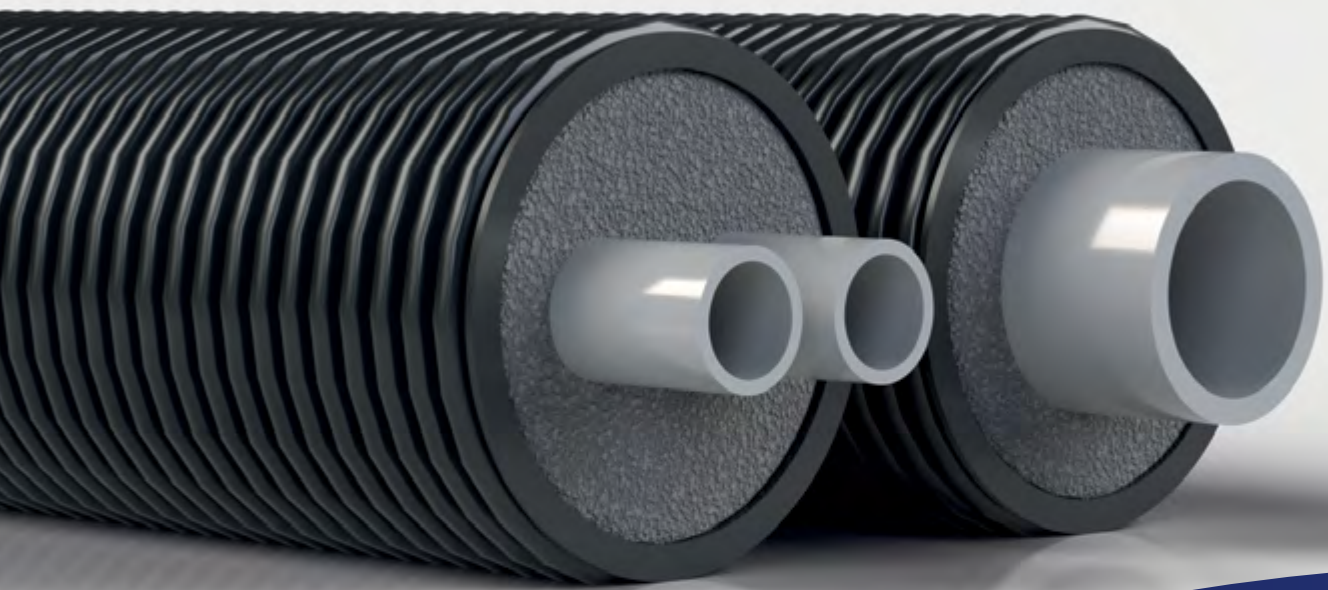


Warning tape



Full range of accessories and tools





**Flexenergy**, 54 Nasmyth Road, Glenrothes, Fife, KY6 2SD

t 01592 773167 | e [office@flexenergy.co.uk](mailto:office@flexenergy.co.uk)